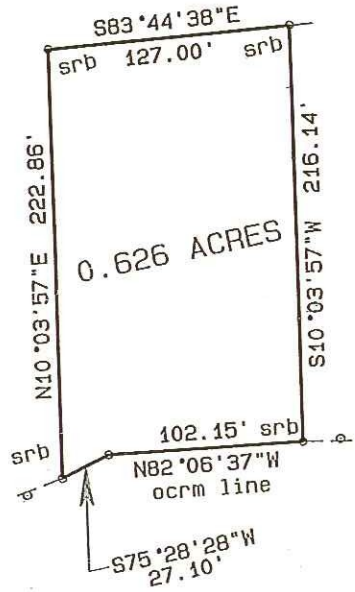


magnetic as found
in pb 23 p 439



Jasper County
South Carolina
TMS 087-00-09-037

Area by coordinate method

- fc - found concrete 4"x 4"
- fc3 - found concrete 3"x 3"
- rb6 - found 3/4" rebar
- sr6 - set 5/8" rebar
- [d] - disturbed
- [b] - buried

